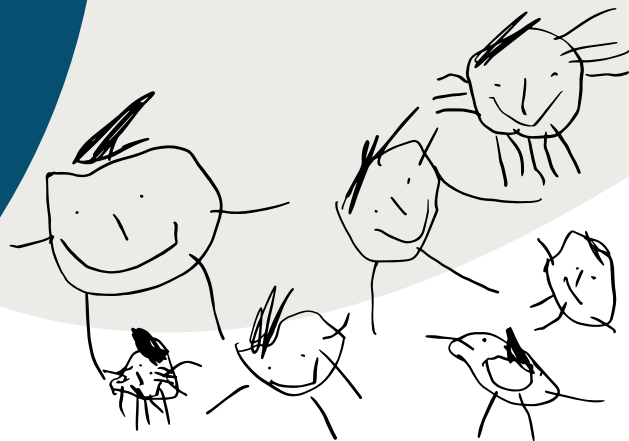


Building Children's Social Emotional Capacity

SRF APPROVED PROGRAM 2025



This program will introduce teaching teams to contemporary ideas related to social and emotional learning, emotional intelligence, emotion literacy and supported social learning. Evidenced informed strategies are shared that support children to label, express, understand and regulate emotions as well as practical ways to engage and learn collaboratively with others. This program will explore the role of the teacher, pedagogy of listening and what it means to engage responsively to strengthen each child's social emotional learning.

The program has 3 components: Self-paced Webinars, Live Online Networks, Teaching Resources

1 SELF-PACED WEBINARS

- x8 Webinars (25min each)
- 12 month subscription
- Project book for reflection

WEBINARS

BUILDING FOUNDATIONS

1. Understanding social emotional learning
2. Integrating emotional intelligence

ENGAGING FRAMEWORKS

3. Introduction to the RULER approach
4. Understanding supportive social learning

TEACHER PRACTICE

5. Pedagogy of listening and observing to inform responsiveness
6. How to adopt an 'emotion coaching' approach

PRACTICAL STRATEGIES

7. The breath - case study and practice ideas
8. Storytelling and drawing – case study and practice ideas

2 LIVE ONLINE NETWORKS

- x4 Live Online Network
- Collaborate & discuss implications for practice
- Registration link is provided upon purchase
- Each live network is recorded

2025 NETWORK DATES

Wed 2nd April, 3:30–5:00pm

- Reflect on webinar 1+2

Wed 18th June, 3:30–5:00pm

- Reflect on webinar 3 + 4

Wed 3rd September, 3:30–5:00pm

- Reflect on webinar 5 + 6

Wed 12th November, 3:30–5:00pm

- Reflect on webinar 7 + 8

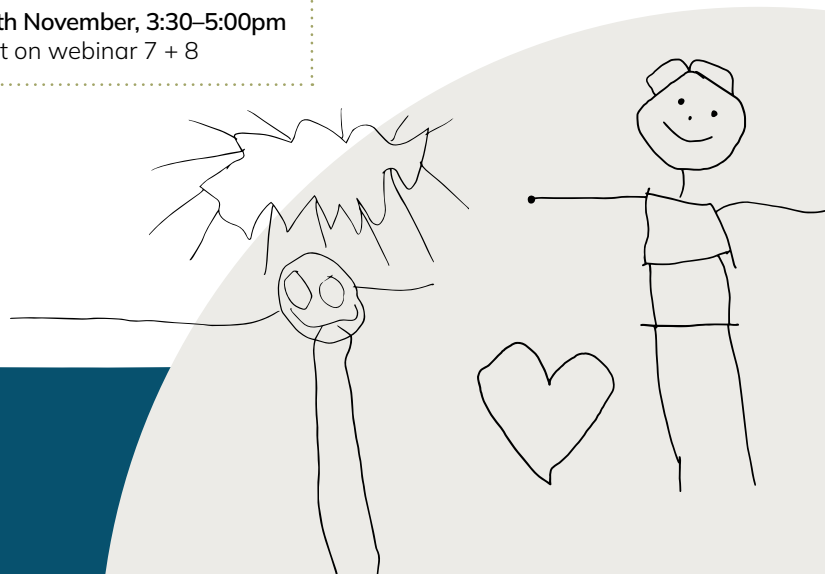
3 TEACHING RESOURCES

- To support a shared language for emotion literacy, each program purchase will be provided
- x1 set of emotion cards
- x1 emotion wheel poster

PROGRAM COSTS

Single Learner
\$500 +GST

Single site with
multiple learners
\$900 +GST



CONTACT:

 kelly@kglearning.com.au

 0410103775